

**coway**

**BΞREX**

Massage Bed, MB-B01  
User Manual

This product cannot be used if the voltage is different from that mentioned in the rating plate. For your safety and proper use of the product, please read this User Manual before use.

**MY**

## Dear BEREX customers

Thank you for using the BEREX Massage Bed.

Please read this user manual carefully for the correct use and maintenance of the product.

You can refer to the user manual to troubleshoot product issues while using it.

**coway**

# **BEREX**

Massage Bed, MB-B01  
User Manual

---

## **III Before Use**

1.	Safety information	3
2.	Part names and accessories	11
3.	Check before use	12

---

## **III How to Use**

1.	Controller and main functions	16
2.	How to use	20
3.	Using the massage bed correctly	21
4.	How to use course massage	22
5.	How to use BEREX course	23
6.	How to use auto massage	24
7.	How to use manual massage	30
8.	Detailed massage settings	31
9.	Product settings	37
10.	How to use quick buttons and additional functions	41
11.	How to stop and end	46

---

## **III Maintenance**

1.	How to clean	48
----	--------------	----

---

## **III Others**

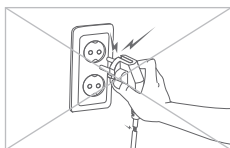
1.	Troubleshooting	50
2.	Specification	51
3.	Warranty	52

# 1. Safety information

**⚠ Warning:** Indicates a case that may result in serious injury or death when violating instructions.

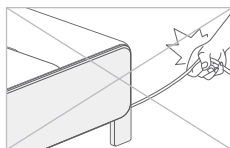
**⚠ Caution:** Indicates a case that may result in minor injury or product damage when violating instructions.

## Power



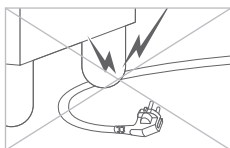
Do not use a damaged power plug or loose sockets.

· There is a risk of electric shock or fire.



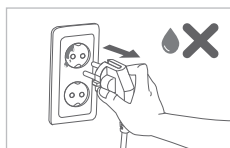
Do not pull on the power plug to move the product.

· There is a risk of electric shock or fire.



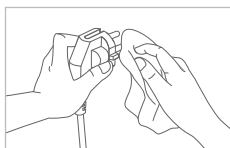
Do not bend the power plug excessively or put it under a heavy object to avoid damage or deformation.

· There is a risk of electric shock or fire.



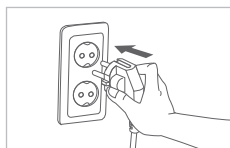
When the power area comes into contact with water, unplug the power plug and completely dry it prior to use.

· There is a risk of electric shock or fire.



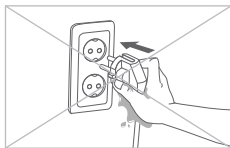
Completely wipe off dust, water, etc., on the power plug's pins and areas of contact with the pins.

· There is a risk of electric shock or fire.



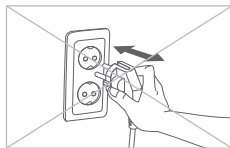
Be sure to insert the power plug into a 220-240 V~, 50/60 Hz outlet.

· There is a risk of electric shock or fire.



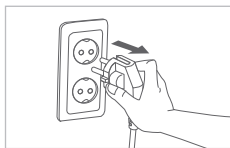
Do not touch the power plug with wet hands.

· There is a risk of electric shock or fire.



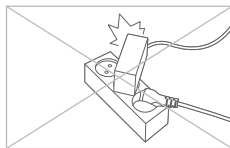
Do not plug or unplug the power plug repeatedly.

· There is a risk of electric shock or fire.



Be sure to unplug the power cord while repairing or inspecting the product or changing its parts.

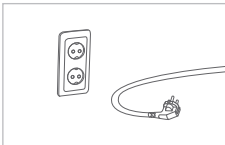
· There is a risk of electric shock or fire.



Do not connect multiple electronic devices to one power outlet. Always use a separate outlet for the product.

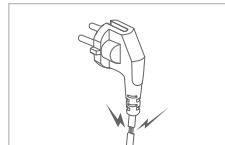
· There is a risk of electric shock or fire.

These instructions are to keep you safe and to prevent property damage.  
Please carefully read the precautions and use the product correctly.



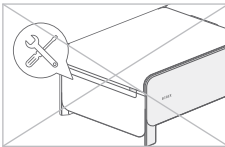
**If you don't use it for a long time, then disconnect the power adapter.**

· There is a risk of electric shock or fire.



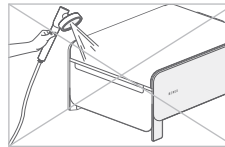
**If the power plug is damaged, do not attempt to replace the plug. Instead, contact the Coway Careline to replace it.**

· There is a risk of electric shock or fire.



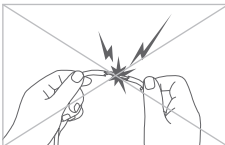
**Never arbitrarily disassemble, repair, or remodel the product.**

· There is a risk of electric shock or fire.



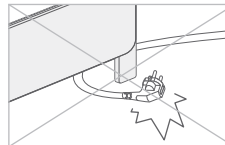
**Do not immerse the product in water or spray water over it.**

· There is a risk of electric shock or fire.



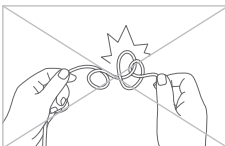
**Do not arbitrarily connect or modify the power plug.**

· There is a risk of electric shock or fire.



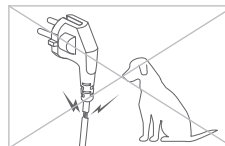
**Be careful not to let the power plug fall under the product.**

· There is a risk of electric shock or fire.



**Do not damage the power plug. Do not bring the product close to a heating device, or excessively bend, pull, tie, or twist it, or place a heavy object on the product.**

· There is a risk of electric shock or fire.



**Be careful not to let pets bite the power plug.**

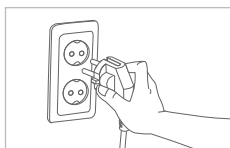
· There is a risk of electric shock or fire.

# 1. Safety information

**⚠ Warning:** Indicates a case that may result in serious injury or death when violating instructions.

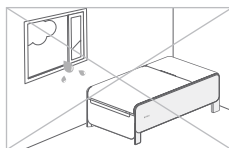
**⚠ Caution:** Indicates a case that may result in minor injury or product damage when violating instructions.

## Installation



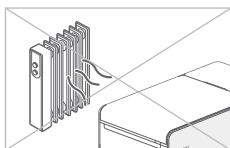
Before using the product, check if the power is securely connected.

- There is a risk of electric shock or fire.



Do not install the product in a location that is highly humid, dusty, or exposed to splashes of water (rain).

- There is a risk of electric shock or fire.



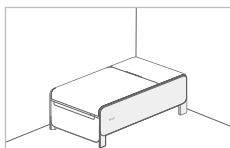
Do not install the product near an electric heating device.

- There is a risk of fire.



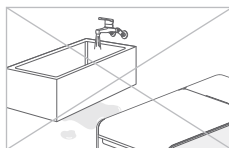
Do not use or store flammable gas or substance near the product.

- There is a risk of fire.



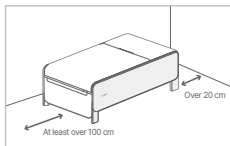
Install the product in a place where the floor is flat.

- If the product is installed on a tilted surface, there is a risk of bodily harm or product damage.



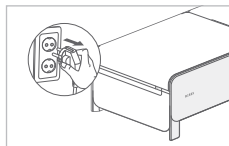
Do not install the product in a wet or humid place such as a swimming pool or bathroom.

- There is a risk of electric shock and short circuit.



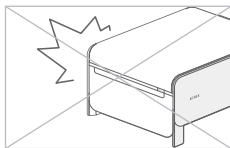
Install the head pad at least 20 cm away from the wall and the leg extension part at least 100 cm away.

- There is a risk of product damage.



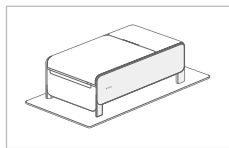
After using the product, be sure to turn off the Power button and unplug the power plug.

- There is a risk of electric shock or fire.



Do not apply excessive force or shock on the product.

- There is a risk of product damage.

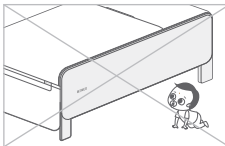


Be sure to install the product on a rug.

- There is a risk of damage on indoor flooring materials.
- The legs of the product may be uneven depending on the flatness of the installation location.

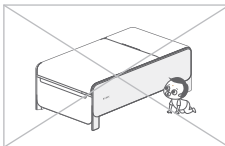
These instructions are to keep you safe and to prevent property damage.  
Please carefully read the precautions and use the product correctly.

## During use by children (infants)



Please be careful to prevent children or pets from getting under the legs or the product.

- There is a risk of injury, such as getting jammed, pressure, and fracture.



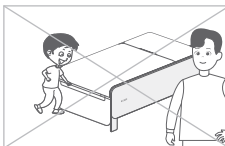
Instruct children not to use the product alone or people who cannot express themselves not to use it. Also, keep it out of reach of children.

- There is a risk of bodily harm.

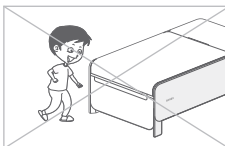


Please do not allow children to climb on or use the massage bed.

- There is a risk of fall, drop, or jam.

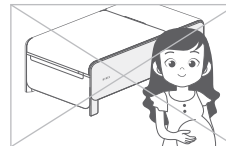


Children shall not play with the appliance.



Do not allow children or people who are not familiar with how to use the product to use it alone.

## During use by elderly people (vulnerable group)



The following patients shall not use the product:

- People with sprain or symptoms of sudden contraction and disconnection of muscle.
- Pregnant women in early pregnancy or immediately after giving birth.



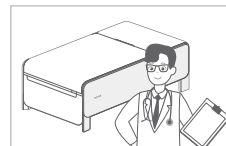
A person who lacks physical, sensory, or mental abilities (including children) need supervision or instruction when using the product.

- There is a risk of bodily harm and product failure.



Be careful with strong massage intensity.

- There is a risk of bodily harm.



The following people should use the product after consulting a doctor. An accident may occur or something wrong with the body may occur.

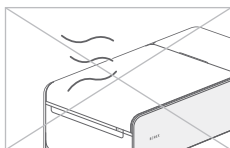
- Those who receive treatment from a doctor due to an accident or illness, or who have something wrong with the body
- Users who have long-term hospital treatment or aftereffect

# 1. Safety information

**⚠ Warning:** Indicates a case that may result in serious injury or death when violating instructions.

**⚠ Caution:** Indicates a case that may result in minor injury or product damage when violating instructions.

## During use by general users



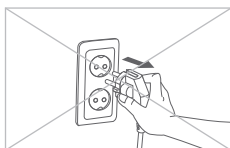
Do not use the heating function for a long time.

· There is a risk of burn.



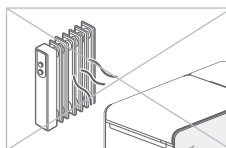
If you feel something wrong with your body while using the product (pain, rash, seizure, itching, etc.), stop using it immediately and consult a doctor.

· There is a risk of bodily harm and health problem.



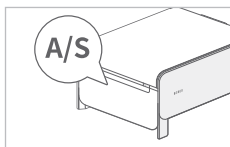
Do not pull out the power forcibly while the product is operating.

· There is a risk of electric shock or fire.



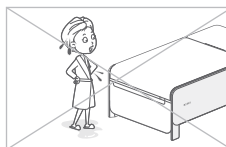
Do not place any appliance that generates heat or moisture near the product.

· There is a risk of electric shock or fire.



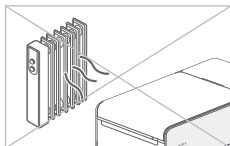
In case of product failure, malfunction, product immersion or exposure to moisture, contact the Coway Careline.

· There is a risk of fire.



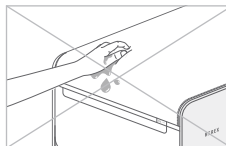
Do not use the product while your body is wet after taking a shower, or while your hair is wet after washing your hair.

· There is a risk of fire.



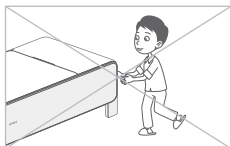
Do not place an electric blanket over the massage bed or use other heating devices together.

· There is a risk of electric shock or fire.



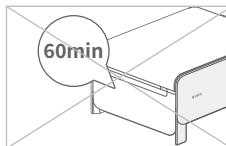
Do not touch the product with wet hands.

· There is a risk of electric shock.



Do not move the massage bed while the product is operating.

· There is a risk of bodily harm, accident, and product failure.

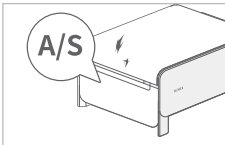


Do not use the massage bed for more than 60 minutes per time. Do not massage too much or massage a specific body area for more than 5 minutes.

· There is a risk of bodily harm and accident.

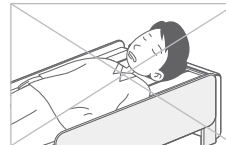


These instructions are to keep you safe and to prevent property damage.  
Please carefully read the precautions and use the product correctly.



If the sheet is torn, stop using it immediately and contact the Coway Careline.

· There is a risk of bodily harm and accident.



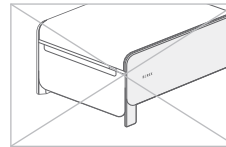
Do not sleep on the massage bed.

· There is a risk of bodily harm and accident.



Do not use the product for any purpose other than use (sleeping, jumping, etc.).

· There is a risk of bodily harm and accident.



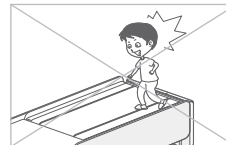
Get off the massage bed after the massage modules have returned.

· Getting off the massage bed while the massage module is operating may cause product malfunction and noise.



Do not press the massage ball directly with your hand or step on it with your feet.

· There is a risk of bodily harm and accident.



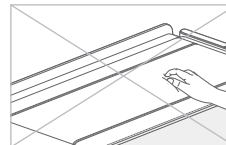
Do not stand on the leg panel, head panel, or armrest of the massage bed.

· There is a risk of bodily harm and product failure.



When massaging the area around your neck, pay attention to the movement of the massage ball and refrain from massage with excessive force.

· There is a risk of bodily harm.



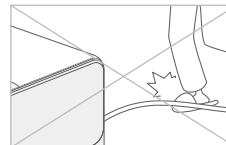
Do not place your hand directly between the massage balls while the product is operating.

· There is a risk of bodily harm and product failure.



When using the product, do not use the product while wearing clothes that are too thin, such as bare skin or underwear.

· There is a risk of bodily harm.



Be careful not to get your feet caught by the product and the controller cord.

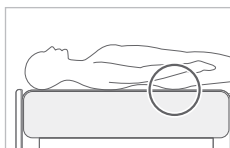
· There is a risk of bodily harm.

# 1. Safety information

**⚠ Warning:** Indicates a case that may result in serious injury or death when violating instructions.

**⚠ Caution:** Indicates a case that may result in minor injury or product damage when violating instructions.

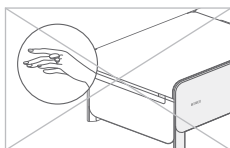
## During use by general users



The hip position may not be correct for users with a height of 180 cm or more.

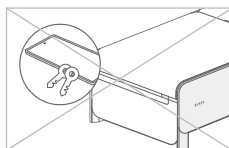


The recommended user weight is 100 kg or less.



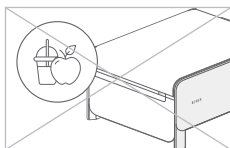
When using the product, remove accessories (bracelets, rings, watches, etc.) before use.

· There is a risk of bodily harm and accident.



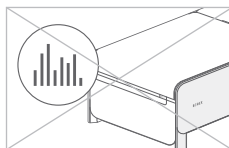
Empty your pockets (smartphone, wallet, keys, etc.) before using the product.

· There is a risk of bodily harm and accident.



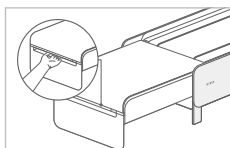
Do not take in food or drink while using the product.

· There is a risk of bodily harm and accident.



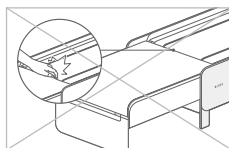
When using a Bluetooth speaker, do not use it with huge volume for a long time.

· There is a risk of hearing damage.



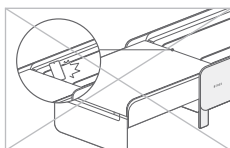
When unfolding the leg panel, be careful not to miss the handles.

· There is a risk of bodily harm and accident.



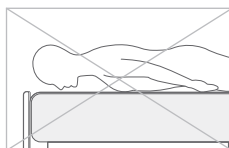
When unfolding the leg panel, be careful not to get your body caught on the side of the back pad or the hip.

· There is a risk of bodily harm and accident.



When unfolding the leg panel, be careful to prevent foreign objects like mobile phones from falling through the gap between the opening/closing cover.

· There is a risk of bodily harm and product failure.



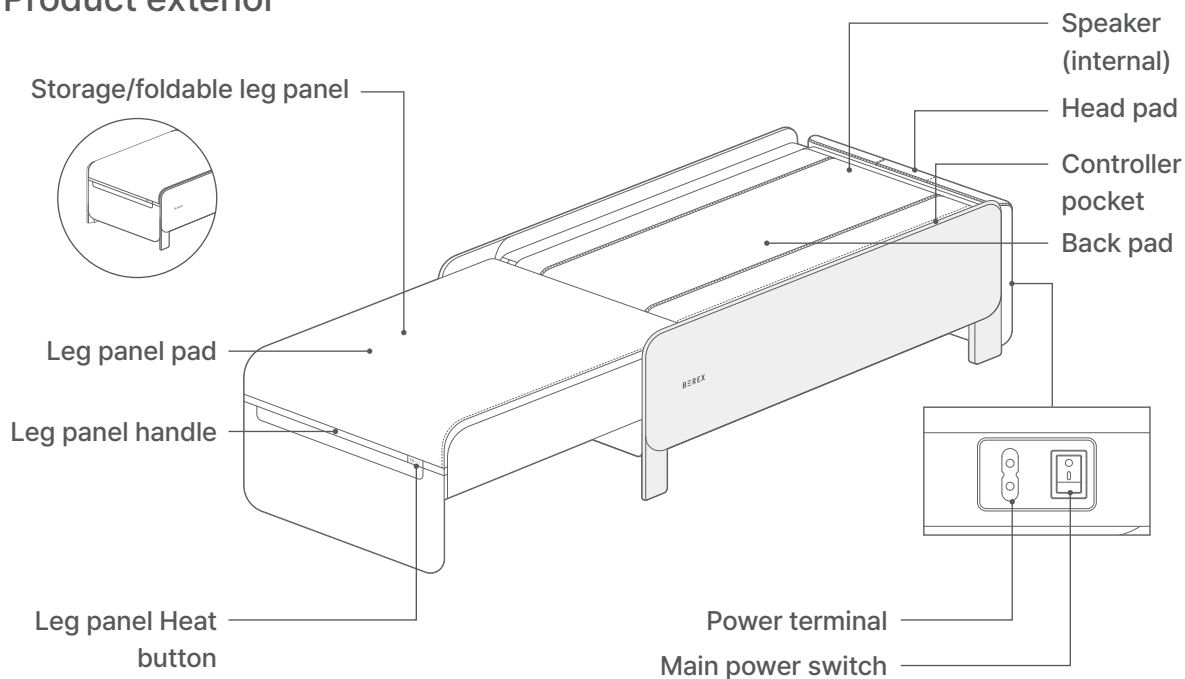
Do not use while lying face down.

· There is a risk of bodily harm and product failure.

## 2. Part names and accessories

You can unfold the product by lifting the leg panel, and holding and pulling the handle.  
 After unfolding the leg panel, hold the handle of the head pad and open it.

### Product exterior



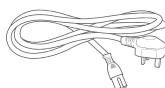
### Other components



User manual



User guide



Power plug



Controller case

---

## 3. Before use

This product is for 220-240 V~, 50/60 Hz only. Be sure to connect the power plug to a grounded 220-240 V~, 50/60 Hz outlet.

The massage bed operates normally only if the power is connected.

When storing for a long period, close the leg panel pad and head pad.

Be careful of bodily harm and damage to the flooring materials when moving the product.

---

### Warning

## Patients who shall not use the product and users who need prescriptions

### • The following patients shall not use the product:

- ① Those who have been recognized as inappropriate to use the product by a doctor due to thrombosis, embolism, severe varicose vein, acute varicose vein, etc.
- ② Those who are suspected of acute cervical sprain (whiplash)
- ③ Those with sprain or symptom of sudden contraction and disconnection of sprain or muscle
- ④ Those who are in early pregnancy or immediately after childbirth
- ⑤ Those who have backbone (spine) abnormality due to an accident or disease in the past, or a person whose backbone is bent left and right
- ⑥ Those with severe osteoporosis
- ⑦ Those with acute intestinal disease, severe heart failure
- ⑧ Those with severe seizure symptoms or psychogenic diseases (perception disorder)
- ⑨ Those who use an implantable electronic medical device such as an implantable pacemaker
- ⑩ Those who have been recognized as having a loss of thermal sense due to a high degree of peripheral circulatory disturbance due to diabetes, etc.
- ⑪ Those who have or are concerned to have osteomyelitis
- ⑫ Those who have limited expression and body movement
- ⑬ Those who are undergoing treatment for a diagnosed fracture
- ⑭ Those with schizophrenia or uncontrollable epilepsy
- ⑮ Those with a risk of bleeding due to pressure
- ⑯ Those who with inflammation or trauma on the skin directly in contact with the product during use
- ⑰ Those with severe heart conditions
- ⑱ Those who are advised against use by a doctor's judgment
- ⑲ Those who have recently undergone skin-related surgery (skin graft)
- ⑳ Those who have recently undergone surgery

### • The following people shall use the product after consulting a doctor.

- ① Those who may have side effects due to the use of the product, such as pregnant women
- ② Those whose body temperatures are higher than normal due to acute inflammation and chill
- ③ Those who have with acute skin disease, malignant tumor, or other skin diseases
- ④ Those who receive medical treatment and need stability accordingly
- ⑤ Those who feel other body abnormalities
- ⑥ Those who have osteopenia
- ⑦ Those who have been diagnosed with or are undergoing treatment for conditions such as vertigo or dizziness
- ⑧ Those who have an impaired sense of pain
- ⑨ Those who have symptoms of fever or are suffering from cancer
- ⑩ Those who are undergoing treatment or have concerns about the recurrence of acute disc herniation or lumbar spinal stenosis
- ⑪ Those who show allergic or hypersensitivity reactions to heat
- ⑫ Those who have various diseases or are suspected of having them

## Precautions when a failure occurs

If a problem with the product occurs, please do not disassemble the product at your discretion.

Additional product defects and accidents may occur.

Before you apply for A/S, check the user manual to take an action. If the problem is not solved, please contact the Careline for further assistance.

## Precautions

### Precautions before use

- If you have a disease for which you shall not use the product, check with your doctor as there is a concern about side effect caused by the use of the product.
- Check how to operate the product possible side effects.
- To use the product safely, start with a low-intensity massage.
- Check the location of the “Stop” or “End” button before using the product.
- Check the duration of the massage session of the product.
- If the cover of the product is torn or peeled off, clothes or hair may curl to cause a serious accident. Check if there is any abnormality in the appearance of the product.
- When using the high-temperature setting, be cautious of burns and use in the appropriate temperature.
- Use the product at a suitable temperature based on your physique and skin condition. If you have sensitive skin, set the temperature to a lower level.
- Children, those who cannot adjust the temperature themselves, and those with reduced skin sensitivity should be cautious of the risk of low-temperature burns even when using the product at a low-temperature setting. (Always wear clothes while using the product.)
- Do not use the product on one part of the body for more than 2-3 minutes if the temperature is set above 45°C.
- Be cautious of the hot surface of the product if you are sensitive to heat.
- This product has a heating surface. Be careful if you are insensitive to heat.

### Precautions during use

- To use the product safely and conveniently, read the user manual thoroughly before use.
- This product is an indoor device for household use only. Do not use it outdoors, commercially, for experiments, or for industrial purposes.
- Be cautious of the risk of falling or slipping when getting on or off the product.
- When disassembling the product, turn off the power through the controller and unplug the power plug.
- Be careful not to let hands or any body parts get caught between the main body and the leg panel.
- Be careful while using the product's heating function.
- Wire twists may occur when using the controller, so check for twists when storing after use.
- Be cautious of potential vomiting or dizziness if used immediately after a meal, depending on your physical condition.
- Do not plug other products or multiple products into a single power strip simultaneously.
- Do not place flammable objects, such as blankets, on top of the product, except for the included components.
- The color of the product may vary depending on the production batch.
- Use the massage balls without twisting your body, maintaining a proper posture.
- Do not use cosmetics or medications on the product.
- Do not throw the controller or twist the cables.
- Do not use heated massage balls on body parts with poor blood circulation or insensitive areas. The residual heat of the massage balls can be dangerous for users with poor health or children.

---

## 3. Before use

This product is for 220-240 V~, 50/60 Hz only. Be sure to connect the power plug to a grounded 220-240 V~, 50/60 Hz outlet.

The massage bed operates normally only if the power is connected.

When storing for a long period, close the leg panel pad and head pad.

Be careful of bodily harm and damage to the flooring materials when moving the product.

---

### Precautions

#### Precautions during use

- If you feel any irritating pain or something wrong with your body, stop using the product immediately and see a doctor.
- Avoid direct skin contact with the heating part and motor moving part of the product.
- Check the duration of the massage session of the product.
- When using the product, do not use it together with other vibrators or electric mats.
- More than 2 persons shall not use the product at the same time.
- Make sure not to damage the massage area of the product with accessories. (hair ornaments, necklaces, wristwatches, bracelets, rings, etc.)

#### Possible side effects when using the product

- **Be careful as the following side effects may occur due to the use of the product.**
  - ① Abrasion, contusion, bruise, stab, cut, etc.
  - ② Damage to muscles, tendons, nerves, spine and etc., due to excessive use and pressure of the product
  - ③ Skin diseases and burns, etc.
  - ④ Fracture and dislocation, sprain, etc.
  - ⑤ Respiratory/digestive disorders and suffocation, etc.

#### Check before using the product.

- Check that there are no objects, people or pets around the product.
- Before use, check that the device operates normally by pressing all the switches in order according to this manual.

### Precautions when a failure occurs

If a problem with the product occurs, please do not disassemble the product at your discretion. Additional product defects and accidents may occur.  
Before you apply for A/S, check the user manual to take an action. If the problem is not solved, please contact the Careline for further assistance.

## Precautions

**Coway (Malaysia) Sdn. Bhd. is not responsible for the following:**

- If you do not observe the use according to the user manual or failure to observe the precautions for use
- If a product is repaired or remodeled by a third party other than Coway, partner company, or designated engineer, thereby resulting in a failure or accident
- If a failure occur due to natural disasters (fire, earthquake, flood, lightning, etc.)

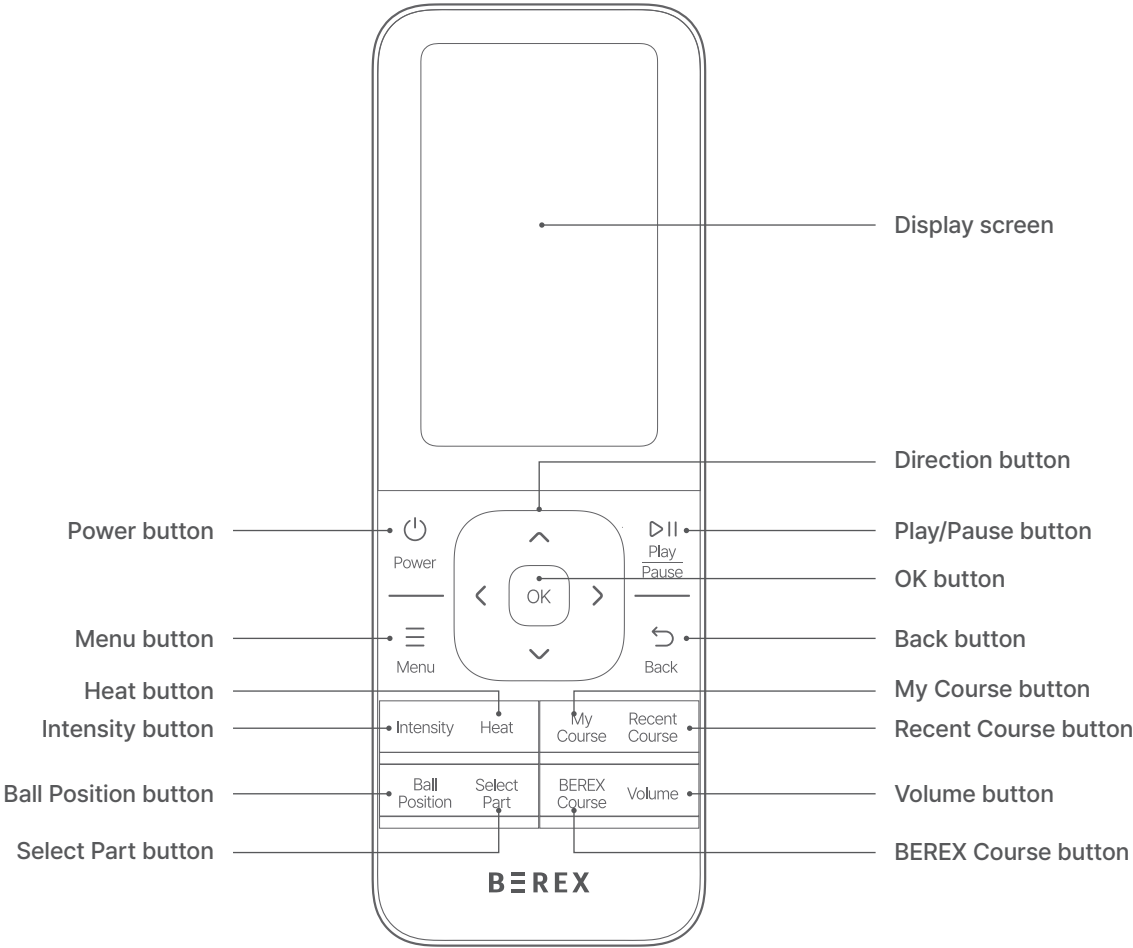
**Please keep this User Manual in a safe place.**

**When moving the product, do not arbitrarily move it and contact the Careline for further assistance.**

- It may cause damage such as scratch to the floor.

# 1. Controller and main functions

## Controller





## Main functions



Power

### Power button

Turn on or off the power of the massage bed.

- If you press the Power button during use, the shutdown confirmation screen is displayed. If you select End and press the OK button, all functions are ended, and the massage balls return to their initial positions.



Play  
Pause

### Play/Pause button

- If you press the button after selecting a massage course, the selected massage starts.
- If you press the button while the massage bed is operating, all functions are paused.
- If you press the button again during the pause, massage is resumed.
- The massage time is also paused during the pause.



Back

### Back button

- Returns to the previous menu or the previous screen.
- If you press and hold for 3 seconds during the massage, the massage shutdown guidance screen is displayed. If you select End and press the OK button, all functions are ended, and the product returns to the standby status.



Menu

### Menu button

- Enters the menu screen.



### Direction button

- Moves the focus or changes the settings.

### OK button

- Enters the selected menu or starts the chosen message.

---

# 1. Controller and main functions

---

## Main functions

---

### Intensity

#### Intensity button

- If you press the button during the massage, intensity in the detailed message settings is focused.

### Ball Position

#### Ball Position button

- If you press the button during the massage, the fixed position message starts and the message position screen is entered.
- If you press and hold the [Up/Down] button at this point, the message position can be adjusted.

### Heat

#### Heat button

- Opens the heat setting pop-up window, allowing you to adjust the upper body, lower body, and message ball heat temperatures.
- The heat of the message balls can be adjusted only during the massage.

### Select Part

#### Select Part button

- Pressing the button during Manual Message focuses on the area in the detailed message settings.

### My Course

#### My Course button

- Enters the My course selection screen.
- Allows you to start the massage immediately by selecting a saved My course. Alternatively, you can delete a saved My course.

### BEREX Course

#### BEREX Course button

- Enters the BEREX course screen.

### Recent Course

#### Recent Course button

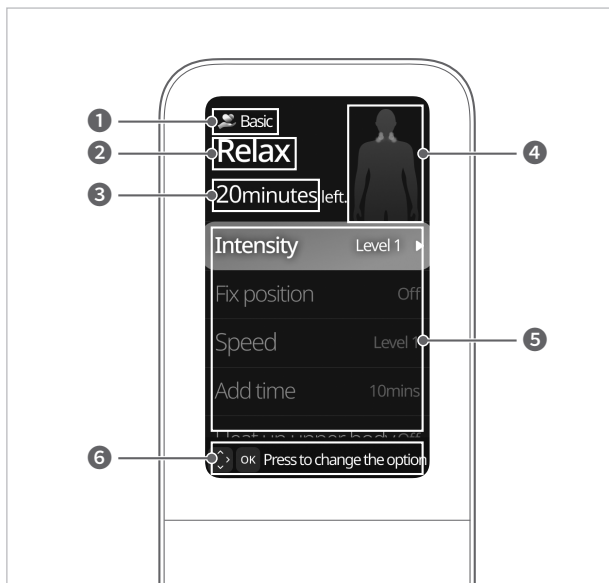
- Enters the Recent course selection screen.
- Allows you to start the massage immediately by selecting a recorded Recent course. Alternatively, you can delete a recorded recent course.

### Volume

#### Volume button

- A volume adjustment pop-up window appears, allowing adjustment from OFF to level 5.

## Display screen



### 1 Theme name

Basic, Healing, User, Everyday, Focus, Manual Massage

### 2 Message course name

### 3 Remaining message time

### 4 Current message area display

### 5 Detailed message settings

You can customize the message in detail.  
You can save the ongoing massage to My course.

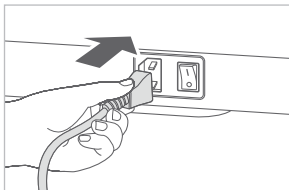
### 6 Button guide

---

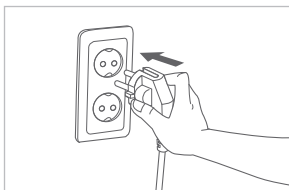
## 2. How to use

---

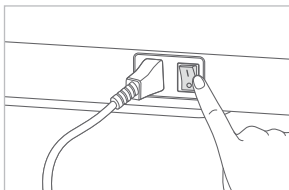
### 01. Turn on the power.



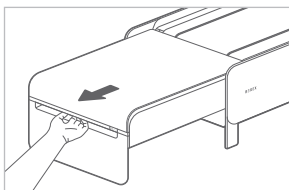
1. Insert the power plug into the massage bed.



2. Insert the power plug into the outlet.

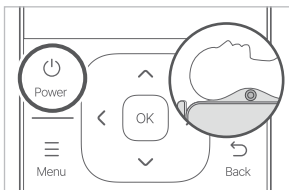


3. Turn on the main power switch on the back of the product.



4. Hold the handle of the leg panel and gently pull and unfold the leg panel pad.

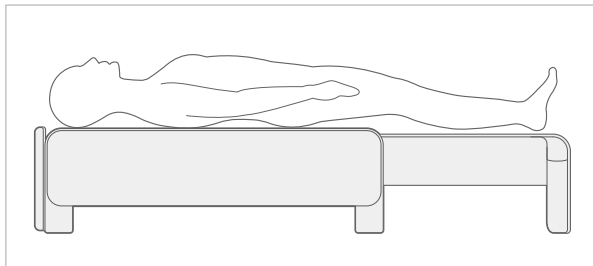
- Do not release your hands until the leg panel pad touches the ground, and gently unfold it.
- After unfolding the leg panel, hold the handle of the head pad and open it.
- If the covers on both sides of the back pad are not closed, press the leg panel slightly down.
- If a strong impact is applied to the product, it may cause damage or noise.



5. Press the Power button on the controller. When the power is turned on, the massage balls will rise up.

## 3. Using the massage bed correctly

### 01. Lie down on the massage bed in the correct posture.



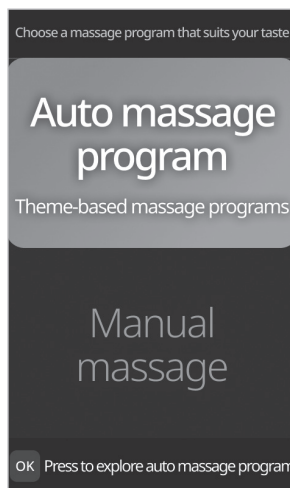
Correct way to lie on the massage bed  
Lie down in a way that your cervical spine is comfortably positioned between the upper massage balls.

- When using a Bluetooth speaker, set the volume appropriately. Huge noise may cause hearing loss.

### 02. Select the desired mode on the controller.



When the Quick mode is off



When the Quick mode is on

- You can use the massage in the standby mode by choosing the desired massage course.
- Refer to the description on the respective page for detailed information about the massage course and each function.

---

## 4. How to use course massage

---

Before lying on the massage bed, make sure there are no foreign objects before lying down.  
During the massage bed operation, do not stand or get down on the bed.  
There is a risk of bodily harm and accident.

### 01. Selecting and starting a course massage

Course massage includes Basic Theme, Healing Theme, User Theme, Everyday Theme, and Focus Theme.

- For detailed instructions on using the Basic Theme, refer to page 24 of the manual.
- For detailed instructions on using the Healing Theme, refer to page 25 of the manual.
- For detailed instructions on using the User Theme, refer to page 26 of the manual.
- For detailed instructions on using the Everyday Theme, refer to page 27 of the manual.
- For detailed instructions on using the Focus Theme, refer to page 28 of the manual.

---

### 02. Body scan

When the course massage starts, the massage balls move downward and scan the body.

- Lie down correctly for an accurate scan.
- The massage starts after the body scan is complete.
- \* Depending on the settings in [Settings - Body Scan], the operation of the body scan may vary.
- \* During the body scan, pressing the OK button for about 3 seconds will end the body scan and start the massage immediately.
- \* During the body scan, only the Power button and OK button are available for use. (other buttons are unavailable)

---

### 03. Proceed massage

The course massage proceeds for the set duration.

- You can switch to a different massage while the massage is in progress.
- If you change the Course Massage during its progress, it will proceed for the set duration of the new course.
- It will automatically stop after continuous use for one hour.
- \* You can change the massage settings through the detailed massage settings menu. Refer to page 31 of the manual for more details.

---

### 04. End massage

When the massage ends, the massage balls return to their original position, and the device returns to the standby mode.

# 5. How to use BEREX course

## BEREX course



When the Quick mode is turned off, or when the power is turned on or the massage course ends, the BEREX course screen appears. Alternatively, if you press the BEREX course button, the BEREX course screen is displayed.

- Use the Left/Right buttons to select the recommended massage course and press the OK or Start button to start the massage.

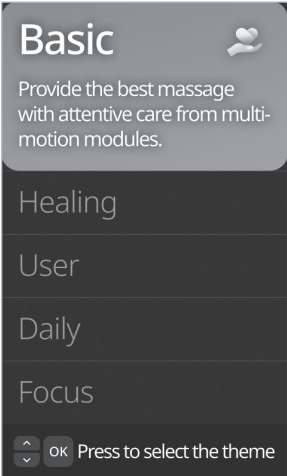
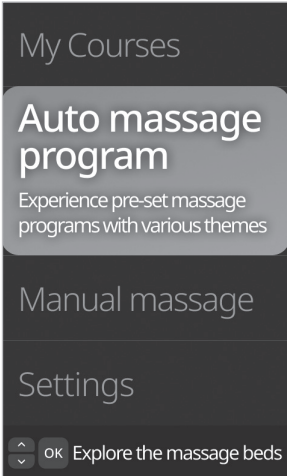
Four random courses from the massage courses of the basic theme are recommended:

- Acupoint: Provide reviving acupressure to reduce swelling.
- Wave: Relax the body through whole body contraction and relaxation.
- Energy: Relief accumulated fatigue from a long day and revitalize with a dynamic massage.
- Special: Apply acupressure at lumbar area for muscle relaxation.
- Relax: Warm up the entire body and relieve fatigue to prepare for restful sleep.
- Spine-focused: Adhere gently to your body and energize your core muscles.

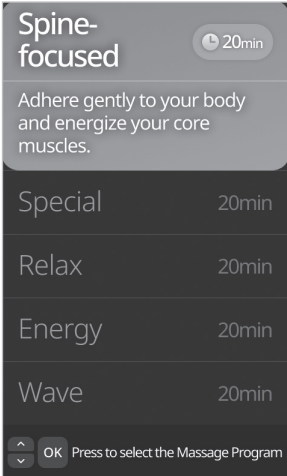


# 6. How to use auto massage

## 01. Basic theme



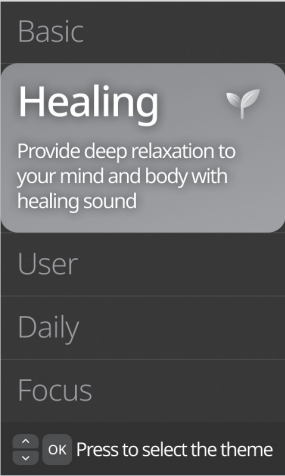
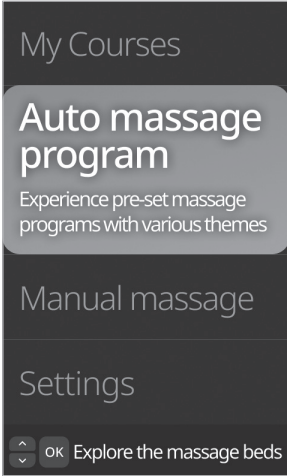
1. Press the Menu button during standby or massage operation to enter the menu screen.
2. Press the Up/Down buttons to select **[Auto Massage - Basic]**, then press the OK button to enter the basic theme.



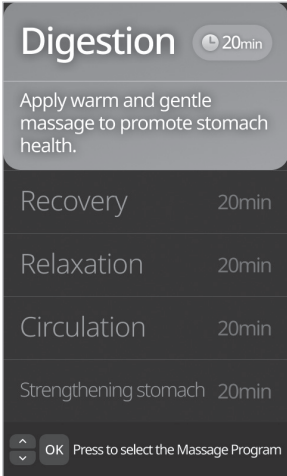
3. Press the Up/Down buttons to select the desired massage course, then press OK or Start button to start the massage.
  - Spine-focused: Adhere gently to your body and energize your core muscles.
  - Special: Apply acupressure at lumbar area for muscle relaxation.
  - Relax: Warm up the entire body and relieve fatigue to prepare for restful sleep.
  - Energy: Relief accumulated fatigue from a long day and revitalize with a dynamic massage.
  - Wave: Relax the body through whole body contraction and relaxation.
  - Acupoint: Provide reviving acupressure to reduce swelling.



## 02. Healing theme



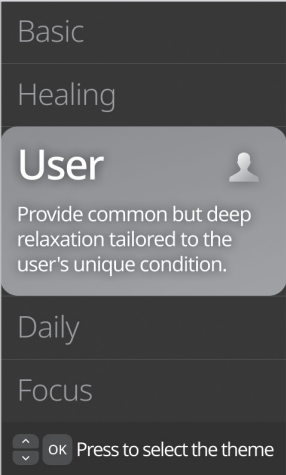
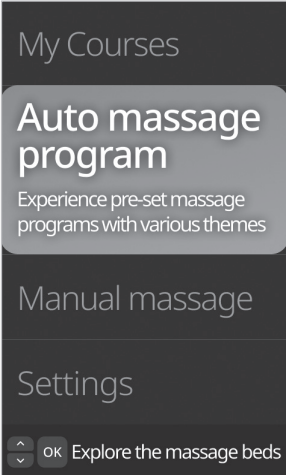
1. Press the Menu button during standby or massage operation to enter the menu screen.
2. Press the Up/Down buttons to select [**Auto Massage - Healing**], then press the OK button to enter the healing theme.



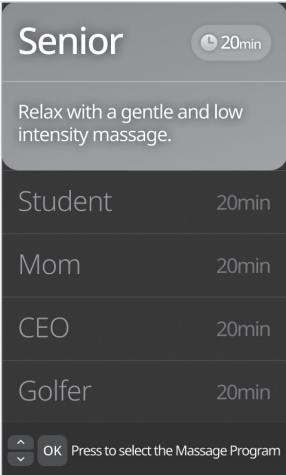
3. Press the Up/Down buttons to select the desired massage course, then press OK or Start button to start the massage.
    - Digestion: Apply warm and gentle massage to promote stomach health.
    - Recovery: Experience a massage that will rejuvenate your exhausted body.
    - Relaxation: Release tension in your core muscles, the center of your body.
    - Circulation: Rejuvenate your legs with a stretching and rubbing massage.
    - Strengthening stomach: Experience inner peace through therapeutic techniques that relieve tension.
- \* Healing theme massage courses are accompanied by Healing music.  
 \* Healing music is not played while using the Bluetooth speaker.

# 6. How to use auto message

## 03. User theme

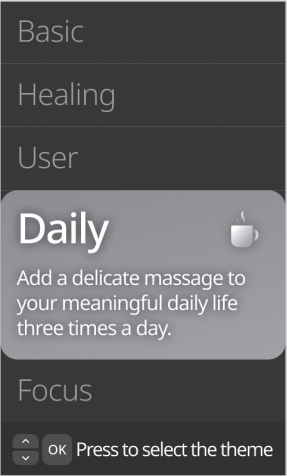
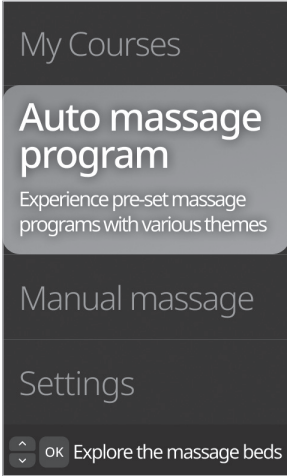


1. Press the Menu button during standby or massage operation to enter the menu screen.
2. Press the Up/Down buttons to select **[Auto Massage - User]** and press the OK button to enter the user theme.

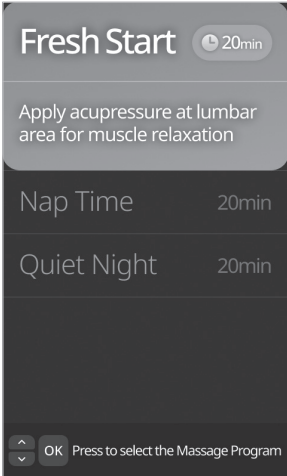


3. Press the Up/Down buttons to select the desired message course, then press OK or Start button to start the massage.
  - Senior: Relax with a gentle and low intensity message.
  - Student: Alleviate the strain on your waist, neck, and shoulders due to studying.
  - Mom: Revitalize your exhausted body and mind due to childcare.
  - CEO: Help in body recovery with dynamic massage techniques.
  - Golfer: Relieve tension by focusing on the muscles used when playing golf.
  - Driver: Provide massage on stiff hips and lower back due to driving.

## 04. Everyday theme



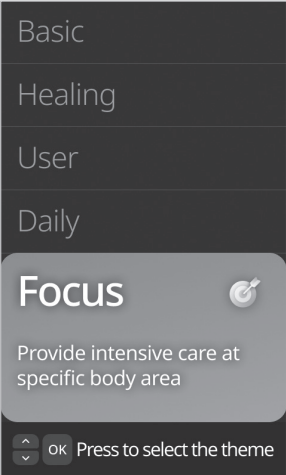
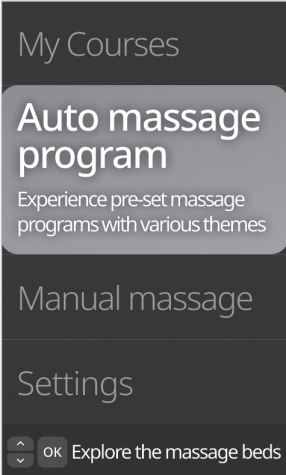
1. Press the Menu button during standby or massage operation to enter the menu screen.
2. Press the Up/Down buttons to select [**Auto Massage - Everyday**], then press the OK button to enter the everyday theme.



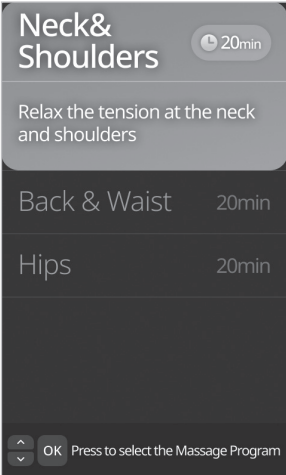
3. Press the Up/Down buttons to select the desired massage course, then press OK or Start button to start the massage.
  - Fresh Start: Your own morning ritual to start the day refreshed.
  - Nap Time: Take a break in the middle of your day to recharge yourself
  - Quiet Night: Take a deep rest and reflect on the precious things you have missed during your busy day.

# 6. How to use auto massage

## 05. Focus theme

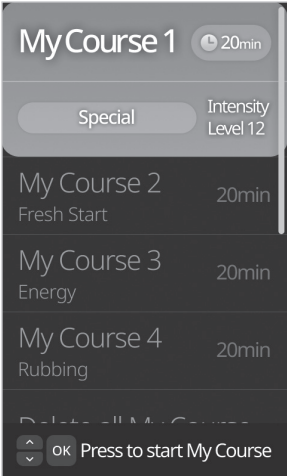
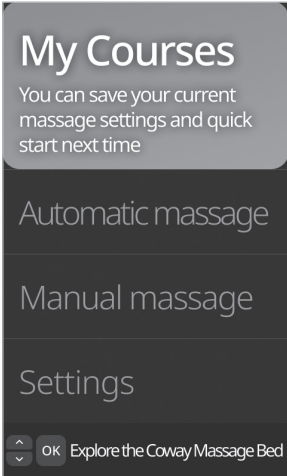


1. Press the Menu button during standby or massage operation to enter the menu screen.
2. Press the Up/Down buttons to select **[Auto Massage - Focus]** and press the OK button to enter the focus theme.



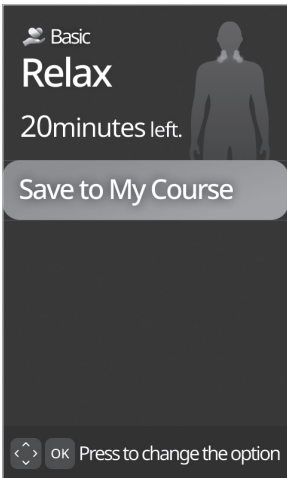
3. Press the Up/Down buttons to select the desired massage course, then press OK or Start button to start the massage.
  - Neck & Shoulders: Relax the tension at the neck and shoulders.
  - Back & Waist: Relief the stiff muscles at the back and waist.
  - Hips: Relief the tight muscles around the hips.

## 06. My course



1. Press the Menu button during standby or massage operation to enter the menu screen. Press the Up/Down buttons to select **[My Course]** and press the OK button to enter My Course.
2. Alternatively, press the My Course button to access the My Course screen.
3. Press the Up/Down buttons to select the desired My Course, then press OK button to start the massage.
  - You cannot start My Course if there is no saved My Course.
  - Select 'Delete All My Courses' at the bottom and press Confirm to delete all saved My Courses.

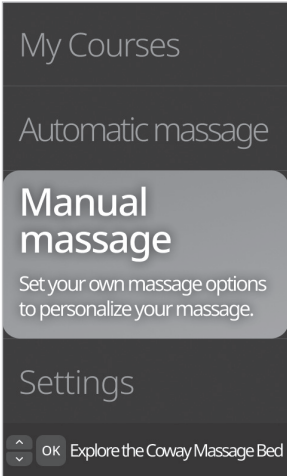
### How to save My course



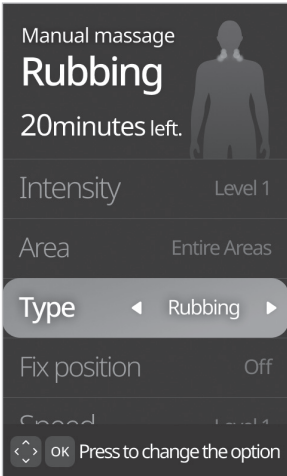
During the massage, select 'Save My Course' in the massage detailed settings, and press the OK button to save the proceeding current course in My Course.

# 7. How to use manual message

## Manual message



1. Press the Menu button during standby or massage operation to enter the menu screen.
2. Select **[Manual Message]** and press the OK button to start the immediate horizontal movement massage after the body scan.

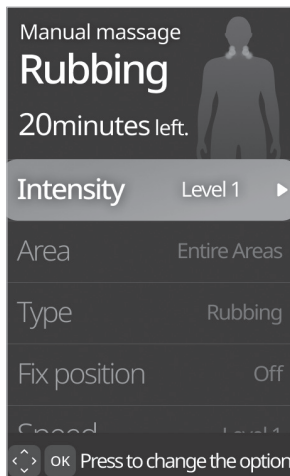


3. During the massage, you can change the massage technique by pressing the Left/Right buttons.
  - Horizontal Movement: The massage balls massage along the body, closely attached to the body and moving horizontally.
  - Acupressure: Massage balls provide deep acupressure therapy on body parts to help relax muscles.
  - Rubbing: Massage the wide area of the body in an up-and-down motion.
  - Wave: Massage balls stretch your body through waves to leave you feeling refreshed.
  - Knocking: Tap quickly while moving smoothly up, down, left, and right.
  - Tapping: Move lightly and quickly up and down in a tapping motion, mimicking hand blades.
  - Kneading: The massage balls come together and split apart to the left and right to knead.

## 8. Detailed message settings

You can set various options for the message through the detailed message settings menu.

### 01. Intensity setting



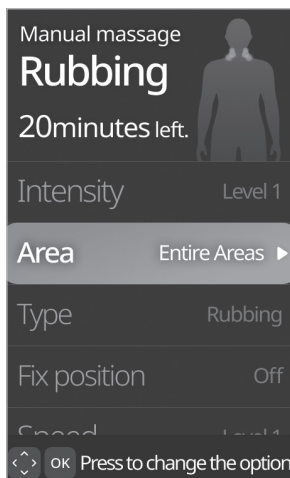
1. Press the Up/Down buttons or the Intensity button to select the intensity, then use the Left/Right buttons to adjust the massage intensity.

2. The changed message intensity will be applied immediately.

#### [Caution]

Start with low intensity and gradually increase it. If you receive a massage with high intensity from the beginning, there is a risk of bodily harm and health problem. If you feel something wrong with your body while using the product, stop using it immediately and consult a doctor.

### 02. Part setting



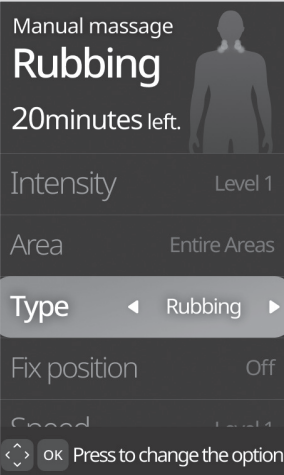
1. Press the Up/Down buttons or the Select Part button to select the body part, then use the Left/Right buttons to change the part.

2. The changed part will be applied to the message immediately.

- Entire Areas: Massage the entire body evenly.
- Neck: Focus the massage on the neck area.
- Shoulders: Focus the massage around the shoulder area.
- Back: Focus the massage on the back area.
- Waist: Focus the massage around the waist area.
- Upper Body: Massage the upper body from the neck to the waist evenly.
- Hips: Focus the massage on the hip area.

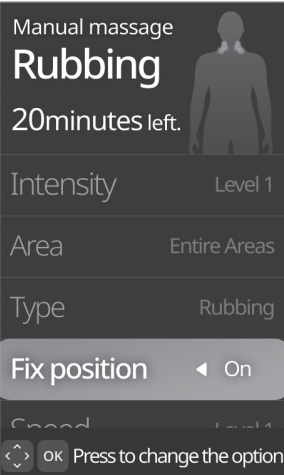
# 8. Detailed message settings

## 03. Mode setting



1. Press the Up/Down buttons to select the mode, then use the Left/Right buttons to set the mode.
2. Press the Up/Down buttons to select the desired massage mode, then press OK or Start button to start the massage.
  - Horizontal Movement: The massage balls massage along the body, closely attached to the body and moving horizontally.
  - Acupressure: Massage balls provide deep acupressure therapy on body parts to help relax muscles.
  - Rubbing: Massage the wide area of the body in an up-and-down motion.
  - Wave: Massage balls stretch your body through waves to leave you feeling refreshed.
  - Knocking: Tap quickly while moving smoothly up, down, left, and right.
  - Tapping: Move lightly and quickly up and down in a tapping motion, mimicking hand blades.
  - Kneading: The massage balls come together and split apart to the left and right to knead.

## 04. Position fixation settings

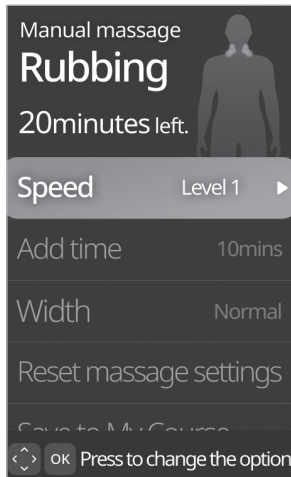


1. Press the Up/Down buttons to select Position Fixation, then use the Left/Right buttons to adjust the position fixation settings.
2. After setting the position fixation to 'On,' users can manually adjust the massage position.
3. To adjust the massage position, press the Ball Position button, enter the massage position settings, and press the Up/Down buttons for precise adjustment.
  - When changing from the 'Off' to 'On', the massage position screen will automatically appear.



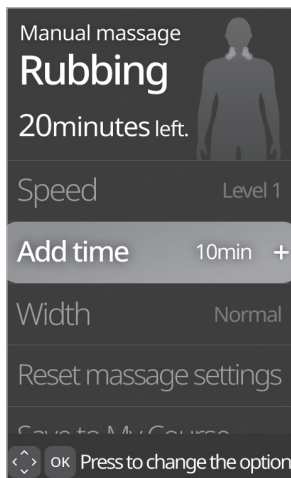
You can set various options for the massage through the detailed massage settings menu.

## 05. Speed settings



1. Press the Up/Down buttons to select the speed, then use the Left/Right buttons to set the speed.
2. The changed speed will be applied to the massage immediately.

## 06. Additional time settings



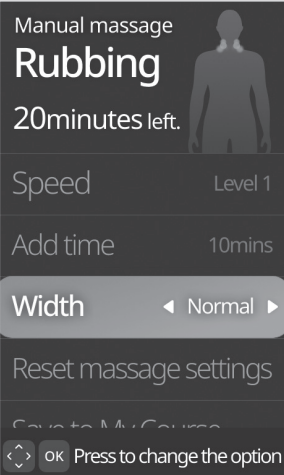
1. Press the Up/Down buttons to select the time, then press the right button or the OK button to add message time.
2. The added message time will be applied immediately.
3. Message time can be added up to a maximum of 60 minutes.
  - Message time can only be added.
  - When the time is added up to 60 minutes, the option value will be displayed as 'Maximum Time.'

---

# 8. Detailed message settings

---

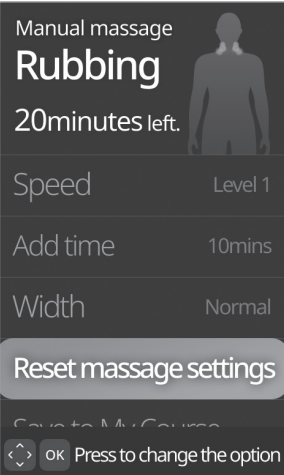
## 07. Massage roller width settings (applies to manual massage only)



1. Press the Up/Down buttons to select the width, then use the Left/Right buttons to adjust the width of the massage balls.
2. The changed massage roller width will be applied immediately.
  - Width adjustment is not possible during the massaging and stretching movements.

---

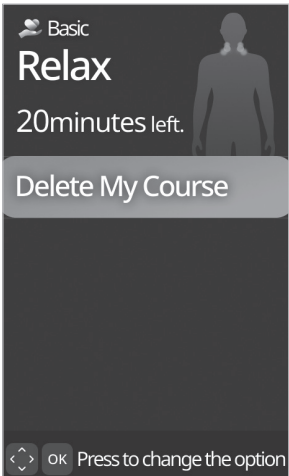
## 08. Resetting message options



1. Press the Up/Down buttons to select 'Reset Message Options,' then press the OK button to reset all detailed massage settings.
2. The reset settings will be applied immediately.

You can set various options for the massage through the detailed massage settings menu.

## 09. Deleting My course (If the proceeding current course is saved in My Course)

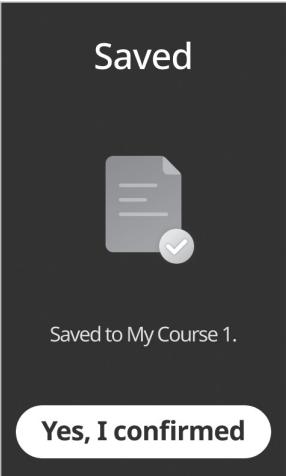
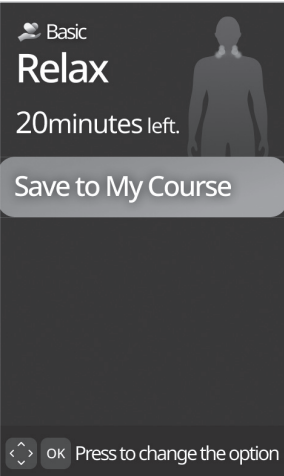


1. Press the Up/Down buttons to select 'Delete My Course,' then press the OK button to remove the proceeding current course from My Course.
- If the proceeding current course is not saved in My Course, you cannot delete it from My Course.

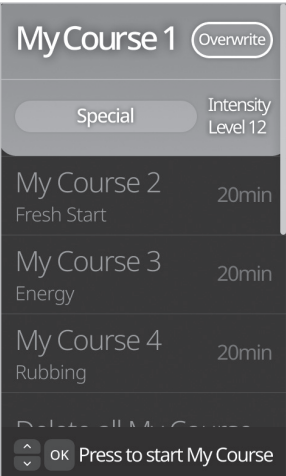
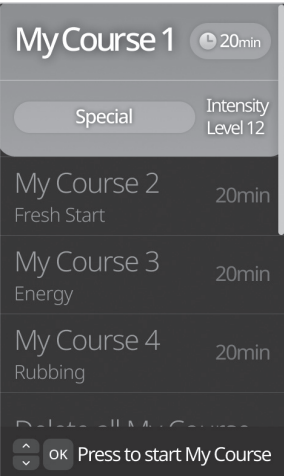
# 8. Detailed message settings

You can set various options for the message through the detailed message settings menu.

## 10. Saving and overwriting My course (If the proceeding current course is not saved in My Course)



1. While the massage is in progress, press the Up/Down buttons to select **[Save to My Course]**, then press the OK button to save the proceeding current course to My Course.
  - If the proceeding current course and message intensity are already saved in My Course, you cannot save it again.

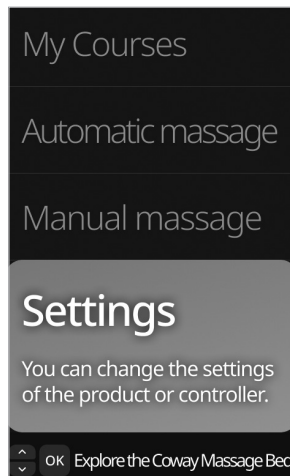


2. When saving to My Course, the proceeding current message course and message intensity values will be saved together.
3. If the My Course list is full, selecting and saving to an existing entry will automatically overwrite the existing My Course with the new one.

# 9. Product settings

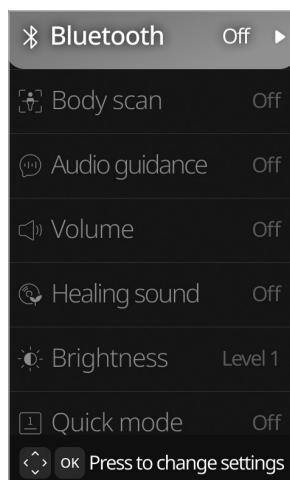
You can set various options for the massage through the detailed message settings menu.

## Product settings



1. Press the Menu button during standby or massage operation to enter the menu screen.
2. Press the Up/Down buttons to select **[Settings]** and press the OK button to enter the settings.
3. Select the desired setting to change, then press the Left/Right or OK button to adjust the settings.

## 01. Bluetooth (Function to set Bluetooth speakers.)



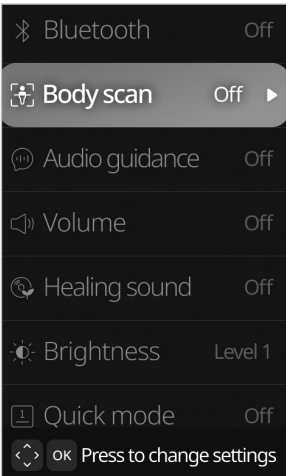
- Press the Up/Down buttons to select **[Bluetooth]**, then press the Left/Right buttons to set the Bluetooth status. (On / Off)
- When Bluetooth is turned off, the product is not searched from your smartphone.
  - For detailed instructions on using Bluetooth speakers, refer to page 45 of the user manual.

---

# 9. Product settings

---

## 02. Body scan (Function to set body scanning method when starting massage.)

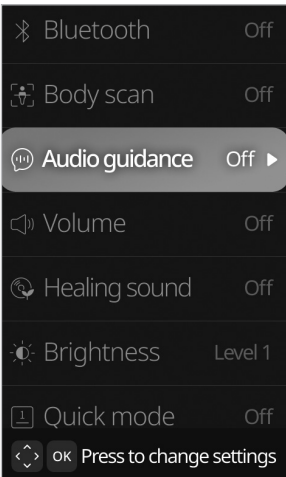


Press the Up/Down buttons to select **[Body Scan]**, then press the Left/Right buttons to set the body scanning method. (Off / Quick scan / Precision scan)

- If Body Scan is set to Off, the product will not perform body scanning at the start of the massage.
- Quick scan is a function to scan the body briefly.
- Precision scan is a function to scan the body in detail.
- If you press and hold the Power button for 5 seconds, the product will be shut down.
- If you press and hold the OK button for 3 seconds, body scan will be ended and the massage will be started immediately.
- During the body scan, only the Power button and OK button can be used. (other buttons are unavailable)

---

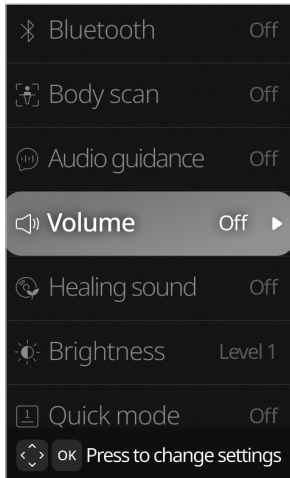
## 03. Audio guidance (Function to set audio guidance.)



Press the Up/Down buttons to select **[Audio guidance]**, then press the Left/Right buttons to set the audio guidance. (On / Off)

- If audio guidance is set to off, the product will not output audio during operation.

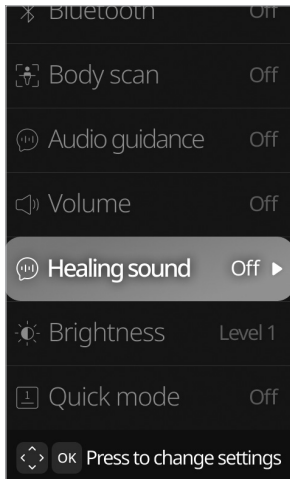
## 04. Volume (Function to set the volume level.)



Press the Up/Down buttons to select **[Volume]**, then press the Left/Right buttons to adjust the volume. (Off ~ Level 5)

- The volume setting is not related to the Bluetooth speaker volume.
- Depending on the volume setting, the audio guidance and Healing sound volume will change.

## 05. Healing sound (Function to set the Healing sound played during massage in the Healing theme.)



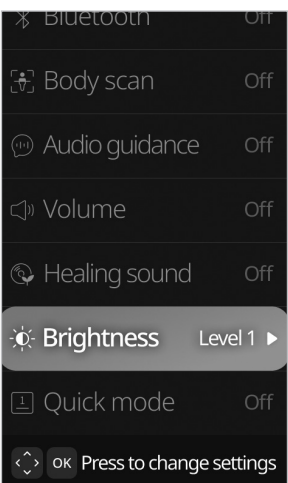
Press the Up/Down buttons to select **[Healing sound]**, then press the Left/Right buttons to set the Healing sound. (On / Off)

- If you set the Healing sound to 'Off,' the Healing sound will not play during the healing theme massage.

You can change product settings through the menu.

# 9. Product settings

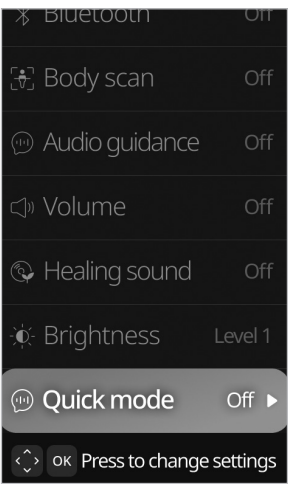
## 06. Brightness (Function to set the brightness of the controller screen.)



Press the Up/Down buttons to select **[Brightness]**, then press the Left/Right buttons to adjust the brightness. (Level 1: Dark / Level 2: Moderate / Level 3: Bright)

- If you use the product in a dark environment, adjusting the brightness to a lower level can make it more comfortable to use the product.

## 07. Quick mode (Function to set the main standby screen of the product to Quick mode.)



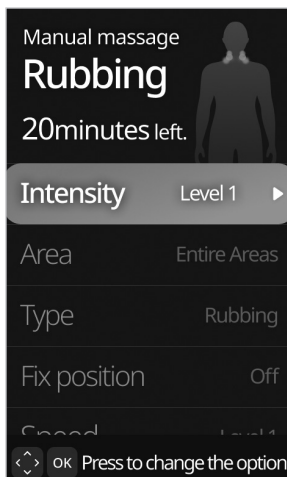
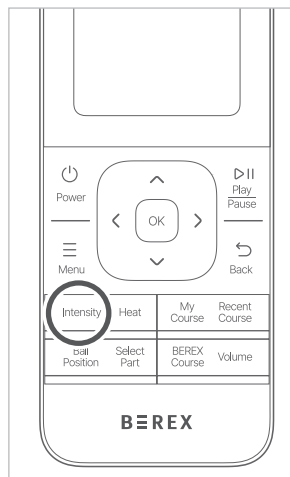
Press the Up/Down buttons to select **[Quick mode]**, then press the Left/Right buttons to set the Quick mode.

- Quick mode On: Enters Quick mode when the product is powered on or when the massage course is finished.
- Quick mode Off: Enters the BEREX course when the product is powered on or when the massage course is finished.
- Quick mode is a function to quickly start the massage by gathering all massage courses in one place for easy and fast access.



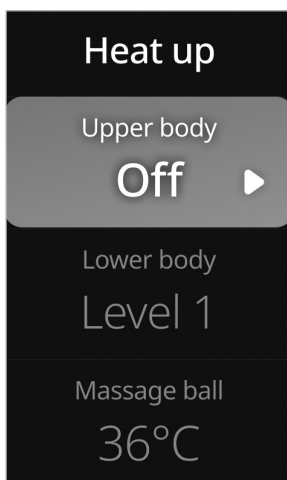
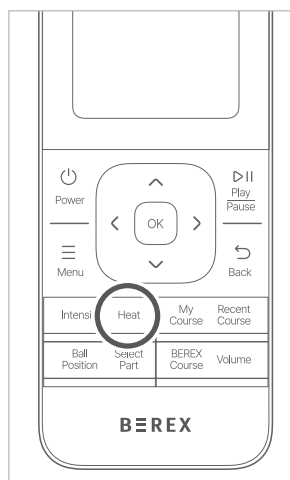
# 10. How to use quick buttons and additional functions

## 01. Intensity button (Function to quickly adjust the massage intensity.)



1. If you press the Intensity button during the massage, the intensity adjustment option is automatically selected in the massage detailed settings.
2. Press the Left/Right buttons to adjust the massage intensity. The changed massage intensity is immediately applied.

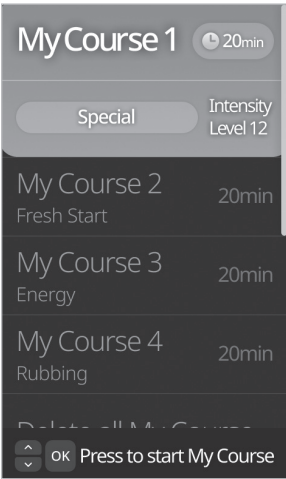
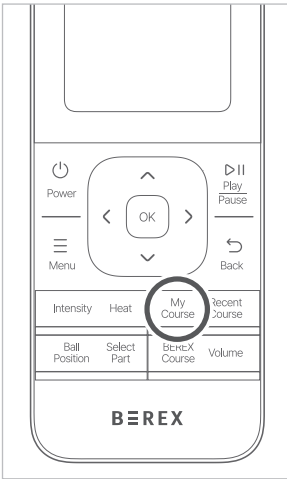
## 02. Heat button (Function to quickly adjust the heat level.)



1. If you press the Heat button In standby mode or during the massage, the heat settings screen is displayed.
  2. Press the Up/Down buttons to select the desired area for heat, then press the Left/Right buttons to adjust the heat temperature. The changed heat temperature is immediately applied.
- Adjusting the heat temperature of the massage balls and using the heat function is only available during the massage.
  - Be cautious about the risk of low-temperature burns when using the heat function for extended periods.

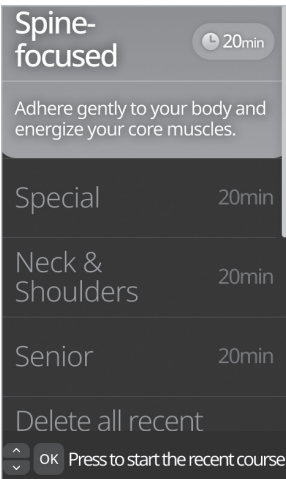
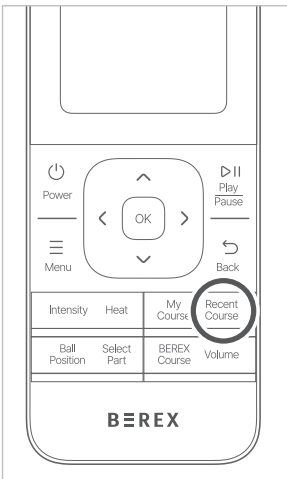
# 10. How to use quick buttons and additional functions

## 03. My Course button (Function to quickly start My Course.)



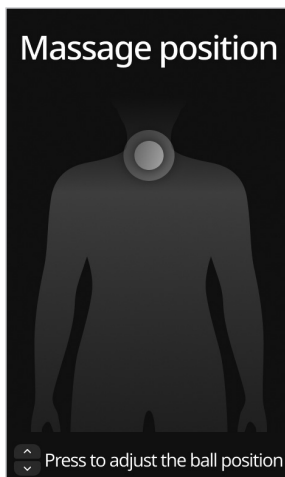
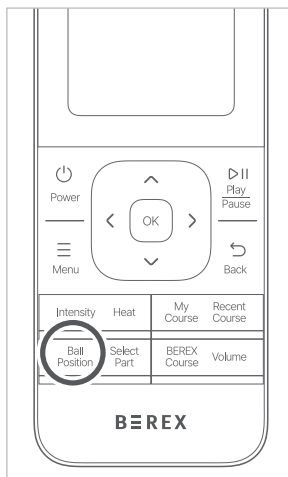
1. If you press the My Course button in standby mode or during the massage, the My Course list is displayed.
2. If you press the Up/Down buttons to select the desired course for setting and press the OK or Play/Pause button, the massage starts.

## 04. Recent Course button (Function to view and quickly start recently used courses.)



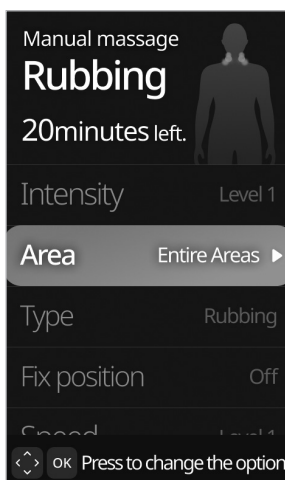
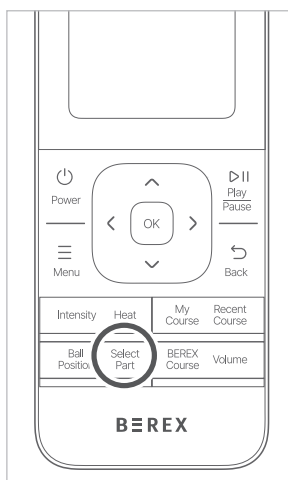
1. If you press the Recent Course button in standby mode or during the massage, the list of recently used courses is displayed.
2. If you press the Up/Down buttons to select the desired course for setting and press the OK or Play/Pause button, the massage starts.
  - Up to 4 recent courses can be saved. (Older courses will be automatically deleted to make space for new ones.)

## 05. Ball Position button (Function to adjust the massage ball position during fixed position massage.)



1. If you press the Ball Position button during fixed position massage, the massage position screen is displayed.
2. Press and hold the Up/Down buttons to adjust the massage roller position manually.

## 06. Select Part button (Function to quickly adjust the massage area.)



1. If you press the Select Part button during the massage, the massage area is automatically selected in the detailed massage settings.
2. Press the Left/Right buttons to adjust the part.
3. The changed part is applied immediately.

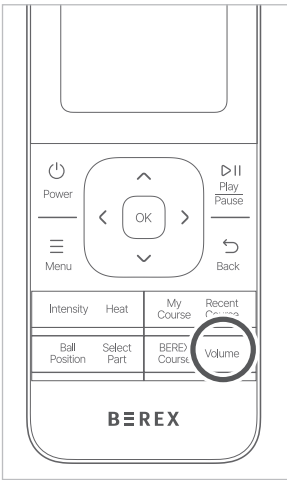
# 10. How to use quick buttons and additional functions

## 07. BEREX course button (Function to randomly recommend message courses.)



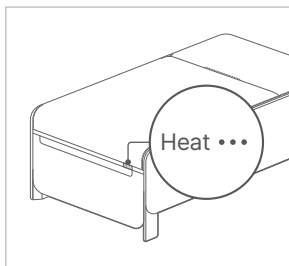
1. If you press the BEREX course button in standby mode or during message, you can enter the BEREX course.
2. Press the Left/Right buttons to select the desired course.
3. Press the OK or Play/Pause button to start the message.

## 08. Volume button (Function to quickly adjust the volume level.)



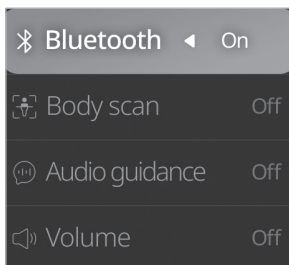
1. If you press the Volume button in standby mode or during the message, the volume setting screen is displayed.
2. Press the Up/Down buttons to adjust the volume to the desired level. The set volume is applied immediately.

## 09. Leg panel Heat button (Function to use the leg pad heat when the massage bed is folded.)



1. If you press the Leg Panel Heat button while the massage bed is folded, the heating function is turned on.
2. Each time you press the button, the leg panel heating level changes in the order of level 1 > level 2 > level 3 > OFF.
3. Even if you unfold the massage bed while the leg panel heating is on, the heating will be maintained.
  - The LED on the button lights up sequentially according to the selected level.
  - For safety reasons, the leg panel heating function automatically turns off after 1 hour of use. (Extended use may risk low-temperature burns, so please use with caution.)

## 10. Using Bluetooth speaker (The massage bed's Bluetooth speaker can be used by connecting it to your smartphone, tablet, etc.)



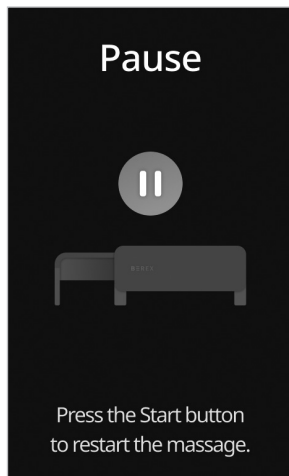
1. Turn on Bluetooth in the settings of the massage bed.
2. Search for Bluetooth on your device (smartphone or tablet).
3. Search for the following device name among the available devices:  
COWAY-MB-B01-\*\*\*\*\* (Serial No.)
4. Select the discovered device and enter the password. (Password: 9999) Once the password is correctly entered, it will be automatically connected.
5. You can confirm the connection on your smartphone.
  - If your device is already connected to another device, it may not find the device name.
  - If the connection is lost, it cannot be automatically reconnected.
  - When using multiple products in the same space, please power on and connect each product to Bluetooth one by one to distinguish Bluetooth serial numbers.

---

# 11. How to stop and end

---

## 01. Pause and resume



1. If you press the Play/Pause button during the massage, the massage is paused.
  - The massage time is also paused during this time.
  - The heat function will remain active while paused.
2. If you press the Play/Pause button while paused, the massage is resumed.
  - During product usage, if the leg panel is lifted, the product is paused for safety, and a warning screen for the leg panel is displayed. After unfolding the leg panel again, you can press the Play/Pause button of the controller to resume the massage.
  - If there is no button input for 10 minutes during the pause, the massage will automatically stop, and the product will return to standby mode.

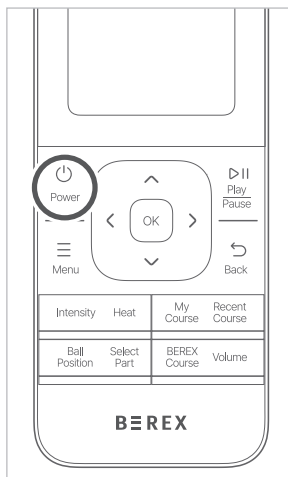
---

## 02. End message



1. If the massage time has elapsed, the massage will automatically stop.
2. When the massage ends, the massage balls will move towards the head and stop all movements.
3. Once the operation is complete, the product returns to standby mode.
  - Alternatively, if you press and hold the Back button for 3 seconds during the massage, a message end confirmation window is displayed. If you select End and press the OK button, the massage stops and the product returns to standby mode.
4. After the massage ends, do not get up immediately. Instead, find your balance and slowly turn your body to the side before getting up. Suddenly getting up from a relaxed muscle state can lead to the risk of injury.

## 03. Product shutdown



Would you like to finish the massage?



When you press the Finish button, the massage will stop, and the power will be turned off. Would you like to finish?

Cancel

Finish

1. If you press the Power button during standby or while the massage is in progress, the product shutdown notification screen is displayed.
2. If you select End and press the OK button, the massage stops and the product returns to the initial state. Alternatively, select Cancel and press the OK button to return to the previous screen.
3. Once you confirm that the product has returned to its initial state, turn off the main power switch of the product.
4. Push the leg panel pad closed as if lifting it up.
  - Check if there are any controllers or objects on the back pad before closing it. (There is a risk of object damage.)
  - Do not release your hands until the leg panel pad is completely closed, and gently close it.
  - Be careful not to get your hands, body, or objects caught on the covers on both sides of the back pad.
  - If a strong impact is applied to the product, it may cause damage or noise.

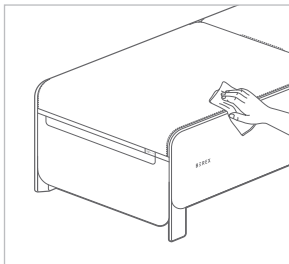
---

# 1. How to clean

- Be sure to pull out the power plug before cleaning.
  - Do not immerse the product in water or spray water over it.
  - Do not use organic solvents (thinner, etc.), bleach, or detergents containing chlorine or abrasives to clean the product.
- 

---

## Main body

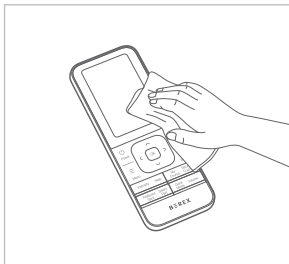


Wipe the exterior and cover of the product with a soft, dry cloth.

- When contaminated, wet a cloth slightly with water and wipe off the contaminant.
- Be sure to remove the remaining water.
- Do not wash the product cover in a washing machine. It may cause product damage.
- Do not iron the product cover with an iron. It may cause fire or product damage.

---

## Controller

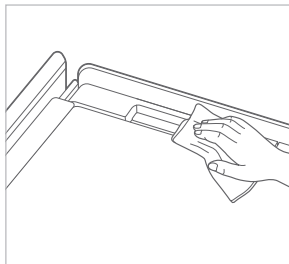


Wipe with a soft, dry cloth.

- When contaminated, wet a cloth slightly with water and wipe off the contaminant.
- Be sure to remove the remaining water.
- Be careful not to let foreign substances enter the controller connector.



## Controller pocket



Wipe with a soft, dry cloth.

- If there are a lot of contaminants inside, absorb them with a vacuum cleaner and wipe them off.
- If there is moisture inside, wipe the cell phone pocket after removing the moisture.

# 1. Troubleshooting

Symptom	Check	Countermeasure
Noise is loud.	<ul style="list-style-type: none"> <li>• Gear motor noise when the massage operates</li> <li>• Rattling noise when tapping</li> <li>• Rattling sound as the massage balls rub against each other</li> </ul>	It is a sound occurred during normal product operation.
Power does not turn on.	The power switch on the back of the product does not turn on.	Turn on the power switch on the back.
	Poor contact with the power plug socket	Insert the power plug and socket correctly.
	Damage and connection failure of the power plug	Contact the Careline for further assistance.
	The fuse disconnected inside the power socket and the Power PBA malfunction	Contact the Careline for further assistance.
	The Power button on the controller has not been pressed.	Press the Power button on the controller.
The product stops suddenly during the massage.	Turn off the power switch on the back of the product and turn on the power switch again after about 5 seconds. After that, press the Power button on the controller to check the end operation.	If the Power button is pressed after taking the necessary measures and the product still does not function properly, stop using the product, unplug the power plug, and contact the Careline for further assistance.
	Regardless of the massage mode, the massage bed automatically returns to the standby mode after 1 hour of use.	Select the massage course again to resume the massage.
The massage ball stops suddenly during the massage.	Did you apply more force than necessary to the massage ball?	<p>Please turn your body slightly.</p> <p>If the product operates normally, it is not a product failure.</p> <p>* If a user whose weight is 100 kg or more uses the product, be careful. This may happen.</p>
During operation, the massage ball gets caught in the inner cloth or bounces.	Friction between massage balls and seat	This is not a malfunction because it is a temporary symptom caused by the massage balls during message.
The back pad and outer massage cloth have stretched.	The back pad and outer massage cloth are made of a material that stretches according to the weight, providing optimal massage based on the body shape.	When used over time, specific areas like hips or back may stretch, which is not a product malfunction.
There is a chemical smell.	For new products, there might be a temporary chemical smell when the packaging is opened. However, it is a harmless odor to the human body and will gradually disappear after use.	Perform proper ventilation during use.
There is a loud noise when unfolding the leg plate.	<ul style="list-style-type: none"> <li>• Friction noise</li> <li>• Internal operating noise</li> </ul>	When unfolding the leg plate, it is normal to hear the sound of the parts preventing it from hitting the floor.
The controller cable is not going into the pocket.	<ul style="list-style-type: none"> <li>• Cable twist</li> <li>• Excessive pulling of the cable</li> </ul>	Check if the cable is tangled. If you pull the cable too hard, it may temporarily stretch, but it will return to normal after some time.
The massage does not start.	Check the leg plate unfolding.	If the leg plate is not completely unfolded, the massage function will not work for safety reasons. Press the leg plate down completely to prevent bulging before use.

---

## 2. Specification

Product name		Coway Massage Bed
Model name		MB-B01
Rated voltage		220-240 V~, 50/60 Hz
Power consumption		320 W
Size	When folded	737 mm (W) X 1,310 mm (D) X 460 mm (H)
	When unfolded	737 mm (W) X 2,060 mm (D) X 447 mm (H)
Weight		94 kg
Distributor		Coway (Malaysia) Sdn Bhd

- There may be changes to the specifications to improve the product's performance.

---

## 3. Warranty

- Please refer to your Sales Order Form for our basic policy for the product warranty.  
For more detailed terms of the product warranty, please visit our website.  
Please note that the terms of our product warranty are subject to change from time to time in compliance with the relevant Malaysian laws and regulations.

---

# MEMO

---

||| Before Use

||| How to Use

||| Maintenance

||| Others

---

## MEMO

---

---

# MEMO

---

||| Before Use

||| How to Use

||| Maintenance

||| Others

**coway**

**BΞREX**

Massage Bed, MB-B01  
User Manual